



FINN-AQUA[®] T-series
Multiple-Effect Water Stills for Pharmaceutical Manufacturing

STERIS Corporation has achieved worldwide leadership in the pharmaceutical and biotech industries by understanding Customers' requirements and providing the highest-quality, most productive systems in the industry. Our integrated systems of products, services and technologies provide solutions for Customers by minimizing contamination risks, improving operational efficiencies, containing costs and improving workplace conditions. In 1971, FINN-AQUA Water Stills were introduced to provide the world's first pharmaceutical grade, multiple effect distillation system. With over 3,200 installations worldwide, the original patented Falling Film evaporator has proven reliability.

OPTIMUM PERFORMANCE MEETS RELIABLE OPERATION

The FINN-AQUA Multiple-Effect Water Still produces distillate that meets U.S. Pharmacopeia (USP), European Pharmacopeia (EP) and Japanese Pharmacopeia (JP) for Water-for-Injection (WFI) guidelines. The FINN-AQUA Multiple-Effect Water Still is equipped with a range of features to ensure that your installation and qualification is quick and trouble-free, and that your WFI production remains efficient and reliable throughout your unit's life. The STERIS FINN-AQUA Multiple-Effect Water Still combines optimum performance with reliable operation, reduced utility consumption and a minimal need for maintenance.

The FINN-AQUA Multiple-Effect Water Still's design, manufacturing and performance is in accordance with many global requirements and guidelines, including:

- ISO 9001
- ISO 14001
- OHSAS 18001



STERIS Safeguards Your Company

As the pharmaceutical industry continues to grow and change, STERIS continues to deliver superior-quality products that are manufactured in accordance with current Good Manufacturing Practices (cGMP).

By choosing FINN-AQUA Multiple-Effect Water Stills, you are taking a proactive step in eliminating instances of contamination, thus safeguarding your company and the end-consumer from products that could be potentially harmful.



Unique Pipe-Joining Method Ensures Longer Life

The first columns as well as all pre-heaters and both condensers in the FINN-AQUA Multiple-Effect Water Still are manufactured with a double-tube-sheet (DTS) design. Within the columns, the pipes are expanded to the flanges without welding to avoid thermal cracking. By doing so, your FINN-AQUA Multiple-Effect Water Still will require less maintenance and prove efficient for years to come.

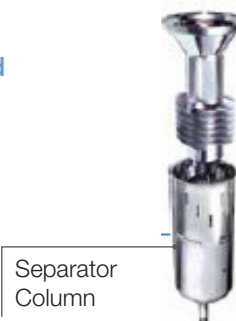
Unique Continuous Blowdown Process From Each Column Separately

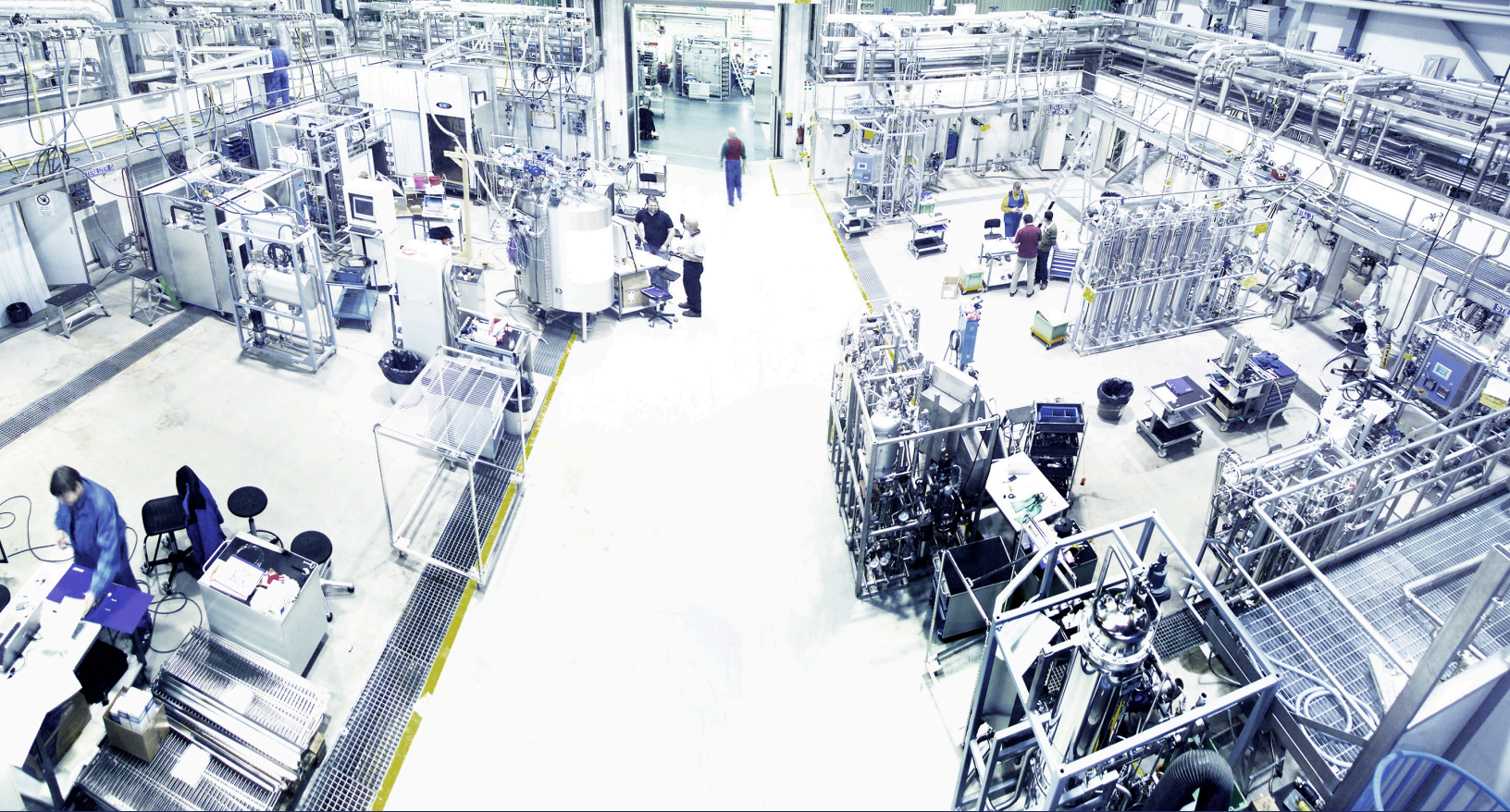
STERIS FINN-AQUA utilizes a unique distillation process within our Water Stills. Concentrated feed water containing all impurities, pyrogens and harmful particles is considered “blowdown” and is redirected to drain. Only pure water, WFI, is allowed to flow into the WFI storage and distribution tank. This unique distillation process removes blowdown from each column separately. Impurities are prevented from being transferred to the next stage, ensuring the highest WFI quality.



FINN-AQUA's patented, three-stage separation technology ensures high-quality steam, free of endotoxins, pyrogens and droplets. Three-stage separation provides:

- Separation by falling film evaporation
- Gravity separation by 180-degree flow turn
- Centrifugal separation
- Continuous blowdown
- Blowdown removal from each column





Testing Saves Time and Money

The unique Factory Acceptance Testing (FAT) Center at our factory in Tuusula, Finland, brings together the latest technologies and our experienced team. Our test protocols are structured to give all FINN-AQUA Multiple-Effect Water Stills a full evaluation before shipment, ensuring that the design, manufacture and operation are 100 percent as specified.

Test bays fully simulate the Customers' specific plant conditions and all test results are precisely documented for smoother and faster on-site verification, thus saving you time and money. Our unique test bay is also equipped with a piping system for in-line CIP and passivation of the whole unit. Endotoxin challenge tests, to prove the high quality of pure steam, are validated LAL tests and ensure the highest purity of steam is generated.

Comprehensive Documentation, Technical Expertise and Global Support

STERIS's global field project management, together with our factory-based project manager organization, is committed to supporting you through the whole project. From design specification submittal to drawing package review to project hand-over, we will oversee your needs from start to finish. STERIS also provides comprehensive documentation in order to assist in validation. Our design, manufacturing testing and documentation processes are all validated and ISO-9001 certified and audited by Lloyd's. Documentation structure, content and format are detailed and cross references are logical and clear. Within our documentation, you will discover that data is easy to locate, thus speeding your validation time. From the time you purchase your FINN-AQUA Multiple-Effect Water Still, STERIS's global service is available in close proximity to provide maintenance when you need it.

FAT Center

Within our FAT Center, we can simulate all final installation conditions such as:

- Plant steam pressure
- Feed water pressure and temperature (softened water and RO/CDI water available)
- Cooling water pressure and temperature
- WFI output demand conditions
- All global voltage and current combinations

STERIS Provides Operational Optimization and Positively Impacts Our Environment

FINN-AQUA Multiple-Effect Water Stills are designed with our environment in mind. Lower utility consumption means less operating costs for you and saves energy for our environment.



FINN-AQUA MULTIPLE-EFFECT WATER STILLS USE

Less Plant Steam



The effective falling film evaporation and patented water distribution to the column enables a high performance from the column, optimizing plant steam consumption.

Less Feed Water



The patented spiral design, which effectively removes endotoxins impurities and droplets, enables a high performance with less feed water consumption.

Less Blowdown



Efficient separation process enables a low blowdown rate of 10 to 15%. With a specially designed option, the percentage of rejected feed water can be reduced down to 5%.

Less Cooling Water



If reduced blowdown temperature is needed, a heat exchanger is used that consumes much less cooling water than is used in a traditional mixing chamber construction.

With lower utility consumption, FINN-AQUA Multiple-Effect Water Stills are friendly to the environment and your operating budget

STERIS Fits Your Needs

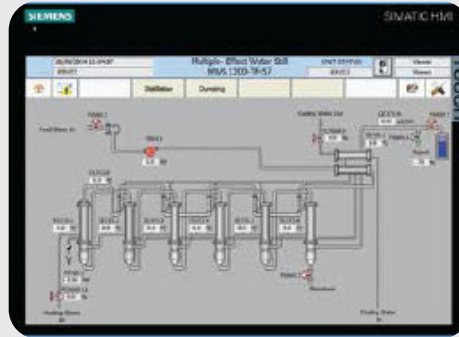
At STERIS, we make every effort to accommodate your varying process needs. We offer the FINN-AQUA Multiple-Effect Water Still in a range of sizes and options. Our wide unit portfolio has a solution for every application – ranging from small sizes for the bioprocess industry up to large units for pharmaceutical manufacturing with capacities up to 17,000 L/h.

T-SERIES	250	450	850	1200	1600	2200	2900	4700	7500
Capacity 3 bar (44 psig) L/h (gal/h)	234 (62)	450 (118)	790 (208)	1.470 (390)	1.820 (481)	2.680 (707)	3.140 (829)	5.460 (1.442)	NOT AVAILABLE*
Capacity 8 bar (116 psig) L/h (gal/h)	540 (143)	890 (235)	1.670 (441)	2.600 (687)	3.450 (911)	4.700 (1.245)	6.000 (1.585)	10.750 (2.839)	17.000 (4.491)
No. of columns	4-5	4-6	4-6	5-7	5-7	5-7	6-8	6-8	7-8

*Capacity range for 7500-T is 4-8 bar

STERIS Offers a Wide Range of Process Options

- Distillation against back-pressure
- Pure steam generator mode
- Simultaneous WFI and pure steam production
- Adjustable distillate outlet temperature
- Automatic blowdown measurement
- Proportional capacity control



Our Multiple-Effects Water Still includes a user-friendly touch screen and is available to order with either the latest Siemens or Allen-Bradley control system platform. Process display also available.

STERIS APPLICATIONS IN PHARMACEUTICAL FACILITY

Sterilization

Finn-Aqua BPS Steam Sterilizers
STERIS VHP LTS-V Low Temperature Sterilizers
Sterility Assurance Products

Lab

AMSCO Steam Sterilizer
Pharmaceutical Detergents
Reliance Lab Washers
Sterility Assurance Products
Surface Disinfectants

Filling Line

Barrier Products
Pharmaceutical Detergents
Surface Disinfectants
STERIS VHP Mobile and Integrated Systems

Component Prep Area

Barrier Products
Critical Environments
Finn-Aqua BPS Steam Sterilizers
Reliance PG Washer
Pharmaceutical Detergents
Sterility Assurance Products
STERIS VHP DC-A Material Transfer Decontamination Chamber

Utilities

Finn-Aqua WFI Distillation
Finn-Aqua Pure Steam Generators
STERIS VHP Integrated System
Pharmaceutical Detergents
Vaprox VHP Sterilant

Gowning Room

Barrier Products
Hand Hygiene
Surface Disinfectants

Services

CECS Testing and Certification
Disinfectant Validation
Equipment Maintenance
Product Feasibility Testing
Cycle Development
Process and Equipment Validation

